

# PM SYSTEM MONITORING FEATURES

## MAIN FRAME

The screenshot displays the 'MAIN FRAME' of the PM System Monitoring interface. At the top, there are six navigation buttons: 'System Info', 'Create', 'Sys Config', 'Preset', 'I/O Config', and 'Edid'. The 'System Info' button is currently selected, and its content is displayed in the main area. The main area is divided into two sections: 'System Info' on the left and 'Channel Info' on the right. The 'System Info' section lists six parameters: 1. INPUT Channel : 32, 2. OUTPUT Channel: 32, 3. RS232 Baudrate: 19200 Bps, 4. Lan IP Address: 192.168.000.002, 5. Product ID : 001, and 6. Software Ver. : PM-32X-M2.30. Below this list are four status indicators: 'Touch Un lock' (green), 'CoolFan Ok' (green), 'Power1 On' (green), and 'Power2 Off' (red). The 'Channel Info' section shows a grid of 32 channels, numbered 01 to 32, arranged in four rows of eight. Each channel is represented by a colored box: blue for channels 01-16, green for 17-24, yellow for 25-32, and red for 33-40. A legend at the bottom of the main area identifies the colors: green for [Video], yellow for [Pattern], orange for [Audio Fix], and blue for [Audio]. At the bottom of the interface, there are six navigation buttons: 'Summary', 'Input', 'Output', 'Input Extender', 'Output Extender', and 'System Lock'.

System Info

Create Sys Config Preset I/O Config Edid

System Info

Channel Info

1.INPUT Channel : 32  
2.OUTPUT Channel: 32  
3.RS232 Baudrate: 19200 Bps  
4.Lan IP Address: 192.168.000.002  
5.Product ID : 001  
6.Software Ver. : PM-32X-M2.30

Touch Un lock CoolFan Ok Power1 On Power2 Off

01 02 03 04 05 06 07 08 09 10 11 12 13 14 15 16  
01 02 03 04 05 06 07 08 09 10 11 12 13 14 15 16  
01 02 03 04 05 06 07 08 09 10 11 12 13 14 15 16  
17 18 19 20 21 22 23 24 25 26 27 28 29 30 31 32  
17 18 19 20 21 22 23 24 25 26 27 28 29 30 31 32  
17 18 19 20 21 22 23 24 25 26 27 28 29 30 31 32

[Video] [Pattern] [Audio Fix] [Audio]

Summary Input Output Input Extender Output Extender System Lock

- CURRENT SWITCHING STATUS
- COMMUNICATION SETTING
- POWER SUPPLY STATUS
- FAN STATUS

# PM SYSTEM MONITORING FEATURES

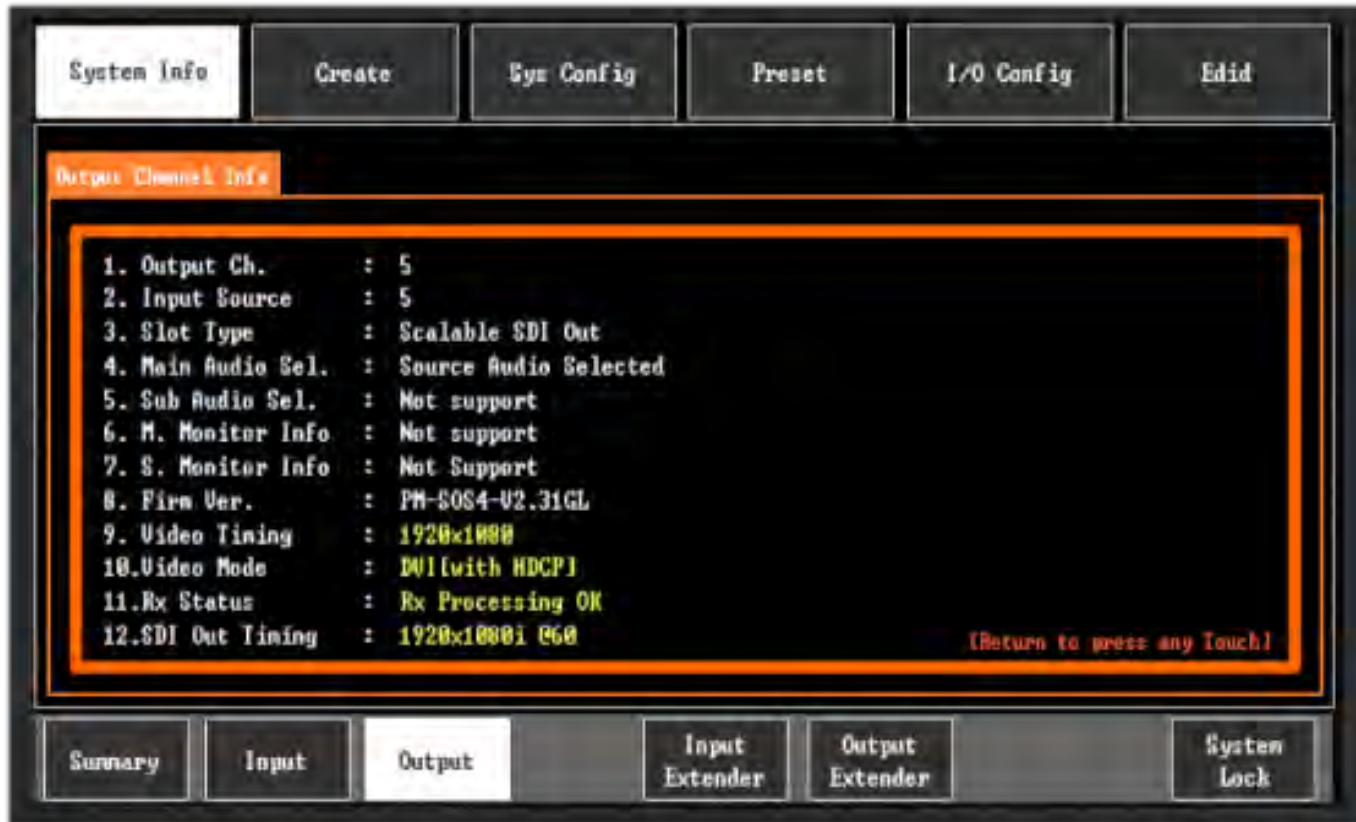
## INPUT



- INCOMING SIGNAL INFORMATION (RESOLUTION, HDCP, AND SIGNAL TYPE)
- BOARD TYPE
- FIRMWARE VERSION
- EDID, VIDEO, AUDIO CONFIGURATION

# PM SYSTEM MONITORING FEATURES

## OUTPUT



- OUTGOING SIGNAL INFORMATION (RESOLUTION, HDCP, AND SIGNAL TYPE)
- BOARD TYPE
- FIRMWARE VERSION
- AUDIO CONFIGURATION

# PM SYSTEM MONITORING FEATURES

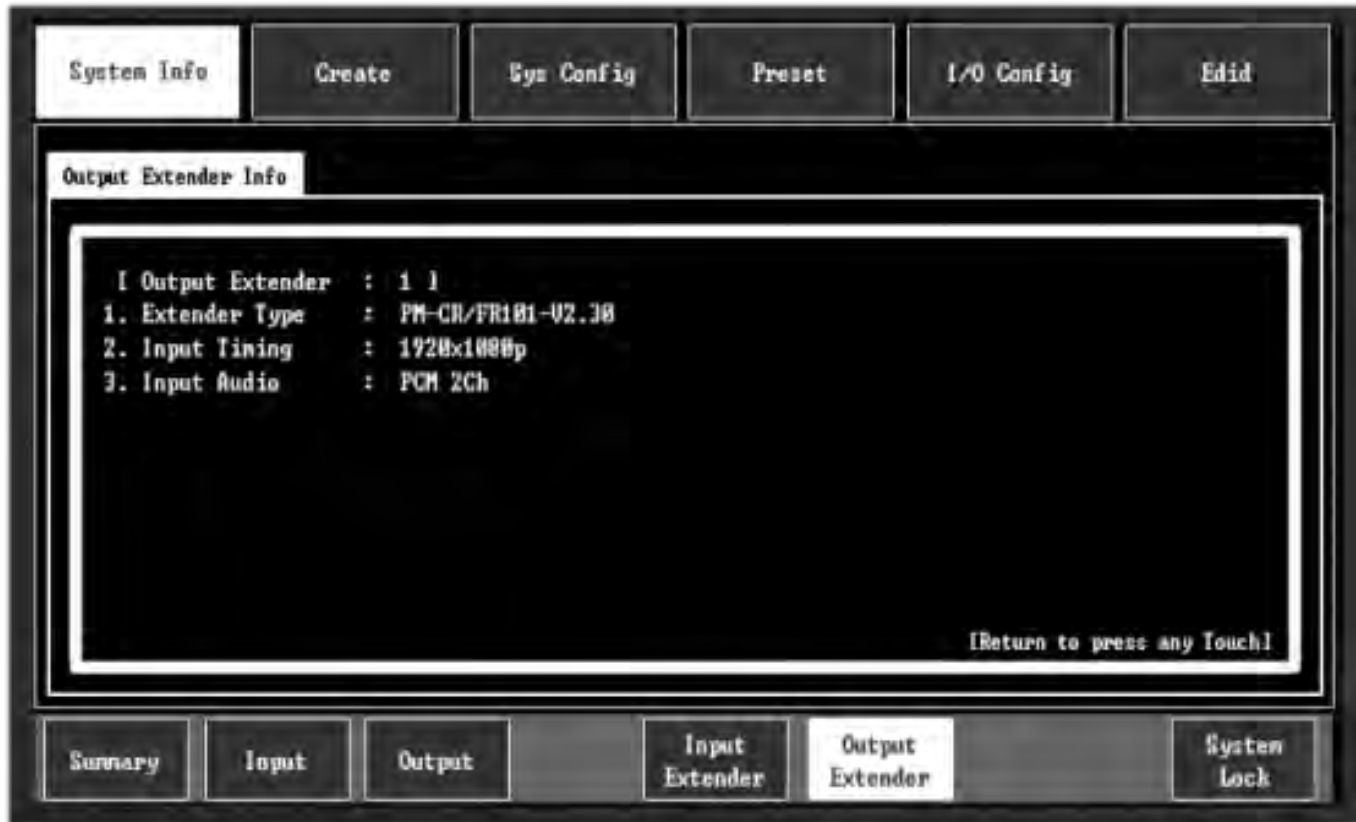
## TRANSMITTER (CATx & FIBER)



- SIGNAL INFORMATION (RESOLUTION & AUDIO)
- TRANSMITTER TYPE
- FIRMWARE VERSION

# PM SYSTEM MONITORING FEATURES

## RECEIVER (CATx & FIBER)



- SIGNAL INFORMATION (RESOLUTION & AUDIO)
- RECEIVER TYPE
- FIRMWARE VERSION