

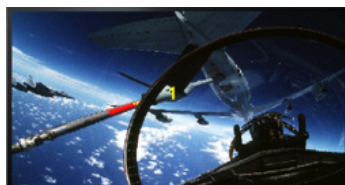
PM-HOS4S-MV-U Quad-View HDMI Output Card for PureMedia™



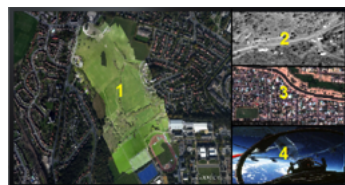
The **PM-HOS4S-MV-U** Quad-View Output Card can send up to four Ultra HD/4K video and computer signals to a single display, transforming any PureMedia™ Matrix Switcher into a cross-platform signal distribution system with a built in multi-view image processing solution. From video-conferencing to broadcast to command-and-control, PureMedia™ signal distribution systems with Quad-View deliver maximum efficiency in any collaborative, mission-critical environment.

Key Features

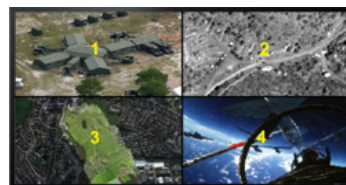
- Quad-view image processing (multiple layouts)
- Easy implementation into existing PureMedia™ systems
- Supports resolutions up to Ultra HD/4K (4096 x 2160 @24/25/30Hz)
- Don't Blink Seamless Switching Technology



Any input in full frame view



Any four inputs with one large and three small windows



Any four inputs in quadrant configuration



Any two inputs in side by side view

Technical Specifications

NUMBER OF PORTS	1 x HDMI
CONNECTOR TYPES	Female HDMI connector
SIGNAL TYPES	RGB digital Video (DVI and HDMI standards) or YCbCr digital component Video (HDMI)
MAXIMUM DATA RATE	3.4 Gbps per color (R,G,B)
INPUT SIGNAL	Any of 4 inputs from PureMedia matrix switch
SUPPORTED RESOLUTIONS	Up to Ultra HD 4K 4096 x 2160 @24/25/30Hz (RGB 4:4:4, YCbCr 4:4:4, 4:2:2, 4:2:0)
MAXIMUM PIXEL CLOCK	Up to 165MHz
SUPPORTED STANDARDS	DVI 1.0 , HDMI 1.4b, HDCP 2.0
SWITCHING SPEED	Max 200ns
OUTPUT HDMI RE-CLOCKING	Automatic
OUTPUT PERIPHERAL DEVICE POWER	600 mA per Output
SUPPORT HOT PLUG DETECTION	Yes
SINGLE BOARD WEIGHT	1 lbs (0.45 kg)